

# Ain't No Mountain High Enough

Recording 2013

## Chords

Nickolas Ashford & Valerie Simpson  
arr. Nicholas Quarrell

**Intro**

♩ = 116  
Bm<sup>7</sup>/A

Bm/G<sup>#</sup>

Bm/G

Bm/F<sup>#</sup>

Em<sup>9</sup>

F<sup>#</sup>m<sup>7</sup>

G<sup>7</sup>

Bm/G<sup>#</sup>

Musical notation for the Intro section, measures 1-4. The notation shows a bass line with eighth notes and quarter notes, and a treble line with rests and quarter notes.

**Verse**

5 Bm<sup>7</sup>/A

Bm/G<sup>#</sup>

Bm/G

Bm/F<sup>#</sup>

Em<sup>9</sup>

F<sup>#</sup>m<sup>7</sup>

G<sup>7</sup>

Bm/G<sup>#</sup>

Musical notation for the Verse section, measures 5-8. The notation shows a bass line with eighth notes and quarter notes, and a treble line with rests and quarter notes.

9 Bm/A

Bm/G<sup>#</sup>

Bm/G

Bm/F<sup>#</sup>

Em<sup>9</sup>

F<sup>#</sup>m<sup>7</sup>

G<sup>7</sup>

Bm/G<sup>#</sup>

Musical notation for the Verse section, measures 9-12. The notation shows a bass line with eighth notes and quarter notes, and a treble line with rests and quarter notes.

13 Bm/A

Bm/G<sup>#</sup>

Bm/G

Bm/F<sup>#</sup>

Em<sup>9</sup>

F<sup>#</sup>m<sup>7</sup>

Musical notation for the Verse section, measures 13-16. The notation shows a bass line with eighth notes and quarter notes, and a treble line with rests and quarter notes.

**Chorus**

17 G<sup>maj7</sup>

Em<sup>9</sup>

F<sup>#</sup>m<sup>7</sup>/A

Bm<sup>7</sup>

G<sup>maj7</sup>

Em<sup>9</sup>

F<sup>#</sup>m<sup>7</sup>/A

Bm<sup>7</sup>

Musical notation for the Chorus section, measures 17-20. The notation shows a bass line with eighth notes and quarter notes, and a treble line with rests and quarter notes.

21 G<sup>maj7</sup>

Em<sup>9</sup>

F<sup>#</sup>m<sup>7</sup>/A

Bm<sup>7</sup>

E

D/F<sup>#</sup> G

Musical notation for the Chorus section, measures 21-24. The notation shows a bass line with eighth notes and quarter notes, and a treble line with rests and quarter notes.

**Verse**

25 Bm/A

Bm/G<sup>#</sup>

Bm/G

Bm/F<sup>#</sup>

Em<sup>9</sup>

F<sup>#</sup>m<sup>7</sup>

G<sup>7</sup>

Bm/G<sup>#</sup>

Musical notation for the Verse section, measures 25-28. The notation shows a bass line with eighth notes and quarter notes, and a treble line with rests and quarter notes.

29 Bm/A

Bm/G<sup>#</sup>

Bm/G

Bm/F<sup>#</sup>

Em<sup>9</sup>

F<sup>#</sup>m<sup>7</sup>

Musical notation for the Verse section, measures 29-32. The notation shows a bass line with eighth notes and quarter notes, and a treble line with rests and quarter notes.

**Chorus**

33 G<sup>maj7</sup>

Em<sup>9</sup>

F<sup>#</sup>m<sup>7</sup>/A

Bm<sup>7</sup>

G<sup>maj7</sup>

Em<sup>9</sup>

F<sup>#</sup>m<sup>7</sup>/A

Bm<sup>7</sup>

Musical notation for the Chorus section, measures 33-36. The notation shows a bass line with eighth notes and quarter notes, and a treble line with rests and quarter notes.

37 G<sup>maj7</sup>

Em<sup>9</sup>

F<sup>#</sup>m<sup>7</sup>/A

Bm<sup>7</sup>

E

D/F<sup>#</sup> G

Musical notation for the Chorus section, measures 37-40. The notation shows a bass line with eighth notes and quarter notes, and a treble line with rests and quarter notes.

2

## Bridge

## Chords

41 A<sup>7</sup>(sus4)A<sup>7</sup>A<sup>7</sup>(sus4)A<sup>7</sup>45 F<sup>♯</sup>m(sus4)F<sup>♯</sup>7

Bm(sus4)

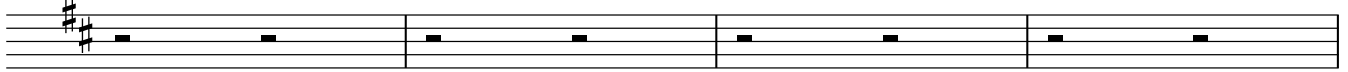
Bm

Gmaj7

Em7

G<sup>6</sup>

G



49 A(sus4)

A

A(sus4)

A

B<sup>b</sup>(sus4)B<sup>b</sup>B<sup>b</sup>(sus4)B<sup>b</sup>

## Verse

53 Cm/B<sup>b</sup>

Cm/A

Cm/A<sup>b</sup>

Cm/G

Fm<sup>9</sup>Gm<sup>7</sup>A<sup>b</sup>7

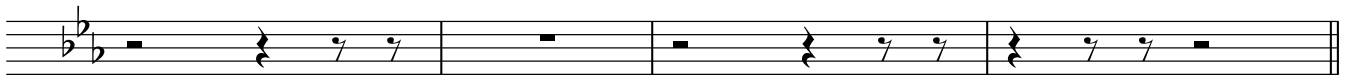
Cm/A

57 Cm/B<sup>b</sup>

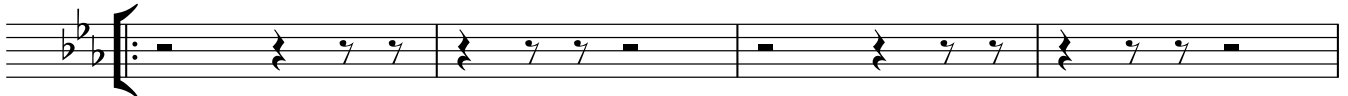
Cm/A

Cm/A<sup>b</sup>

Cm/G

Fm<sup>9</sup>Gm<sup>7</sup>

## Chorus

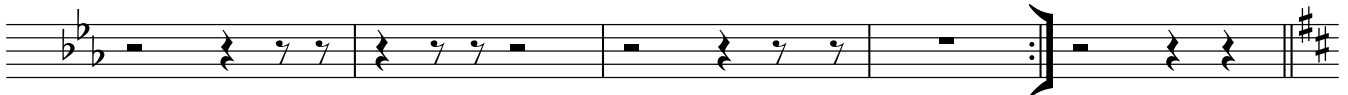
61 A<sup>b</sup>maj7Fm<sup>9</sup>Gm<sup>7</sup>/B<sup>b</sup>Cm<sup>7</sup>A<sup>b</sup>maj7Fm<sup>9</sup>Gm<sup>7</sup>/B<sup>b</sup>Cm<sup>7</sup>65 A<sup>b</sup>maj7Fm<sup>9</sup>Gm<sup>7</sup>/B<sup>b</sup>Cm<sup>7</sup>

F

E<sup>b</sup>/G A<sup>b</sup>

1.

2.

A<sup>b</sup>7

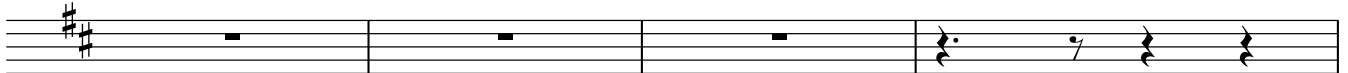
## Horn Break

70 Em<sup>7</sup>/A

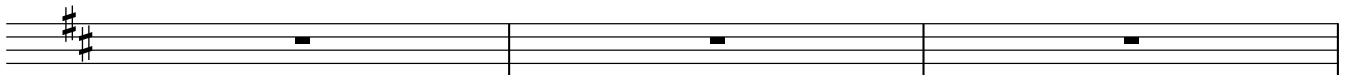
Dmaj7

Em<sup>7</sup>/A

Dmaj7

F<sup>♯</sup>m7B<sup>7</sup>74 Em<sup>7</sup>/A

Dmaj7

Em<sup>7</sup>/A

77 A(sus4)

A

A(sus4)

A

B<sup>b</sup>(sus4)B<sup>b</sup>B<sup>b</sup>(sus4)B<sup>b</sup>

## Verse

81 Cm/B<sup>b</sup>

Cm/A

Cm/A<sup>b</sup>

Cm/G

Fm<sup>9</sup>Gm<sup>7</sup>A<sup>b</sup>7

Cm/A



Chords

85 Cm/Bb Cm/A Cm/Ab Cm/G Fm<sup>9</sup> Gm<sup>7</sup>

Chorus

89 Abmaj<sup>7</sup> Fm<sup>9</sup> Gm<sup>7</sup>/Bb Cm<sup>7</sup> Abmaj<sup>7</sup> Fm<sup>9</sup> Gm<sup>7</sup>/Bb Cm<sup>7</sup>

93 Abmaj<sup>7</sup> Fm<sup>9</sup> Gm<sup>7</sup>/Bb Cm<sup>7</sup> F Eb/G Ab 1.

Outro

Meno mosso

97 2. F Eb/G Ab Gm<sup>7</sup> Abmaj<sup>7</sup> Fm<sup>9</sup> Gm<sup>7</sup>/Bb Cm<sup>7</sup>